

Core FTP Client Basic Overview

For improved security the Pace external servers require the Core FTP Client to access their accounts. The non-commercial free version of the software can be downloaded at <ftp://ftp.coreftp.com/coreftplite1.3.exe>

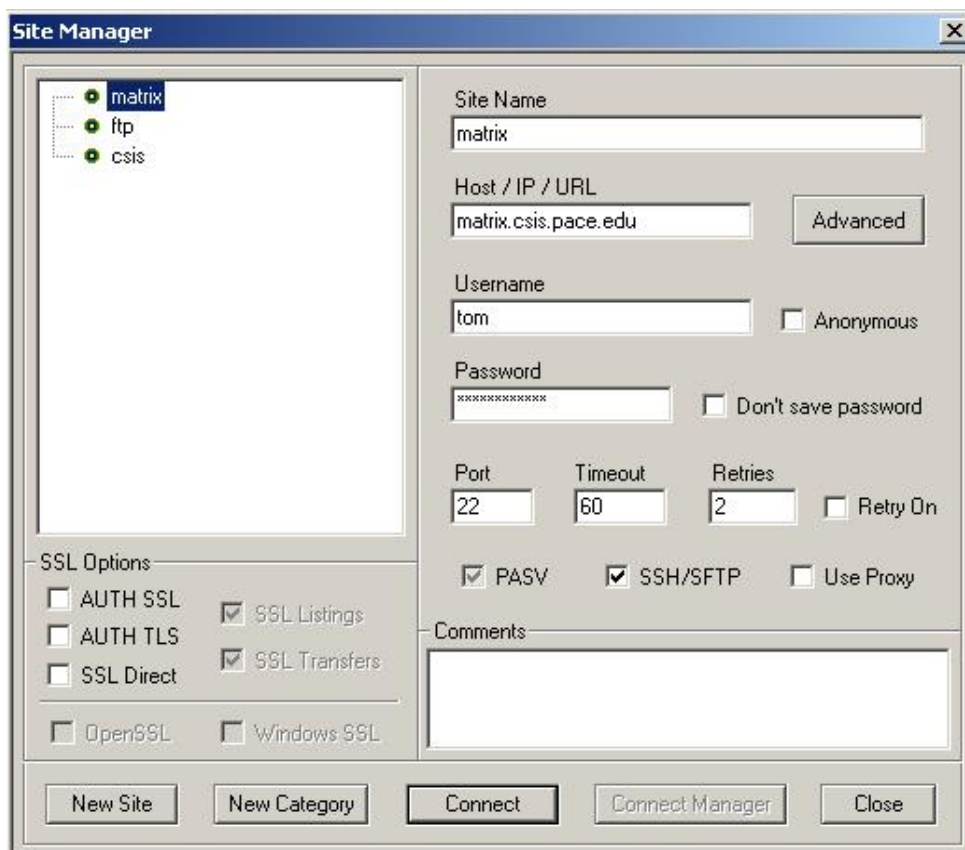
This document is not intended to be an in depth examination of the Core FTP client, but should provide you with enough guidance to get you up and running. Full documentation can be found at <http://www.coreftp.com/doc/>

Installation

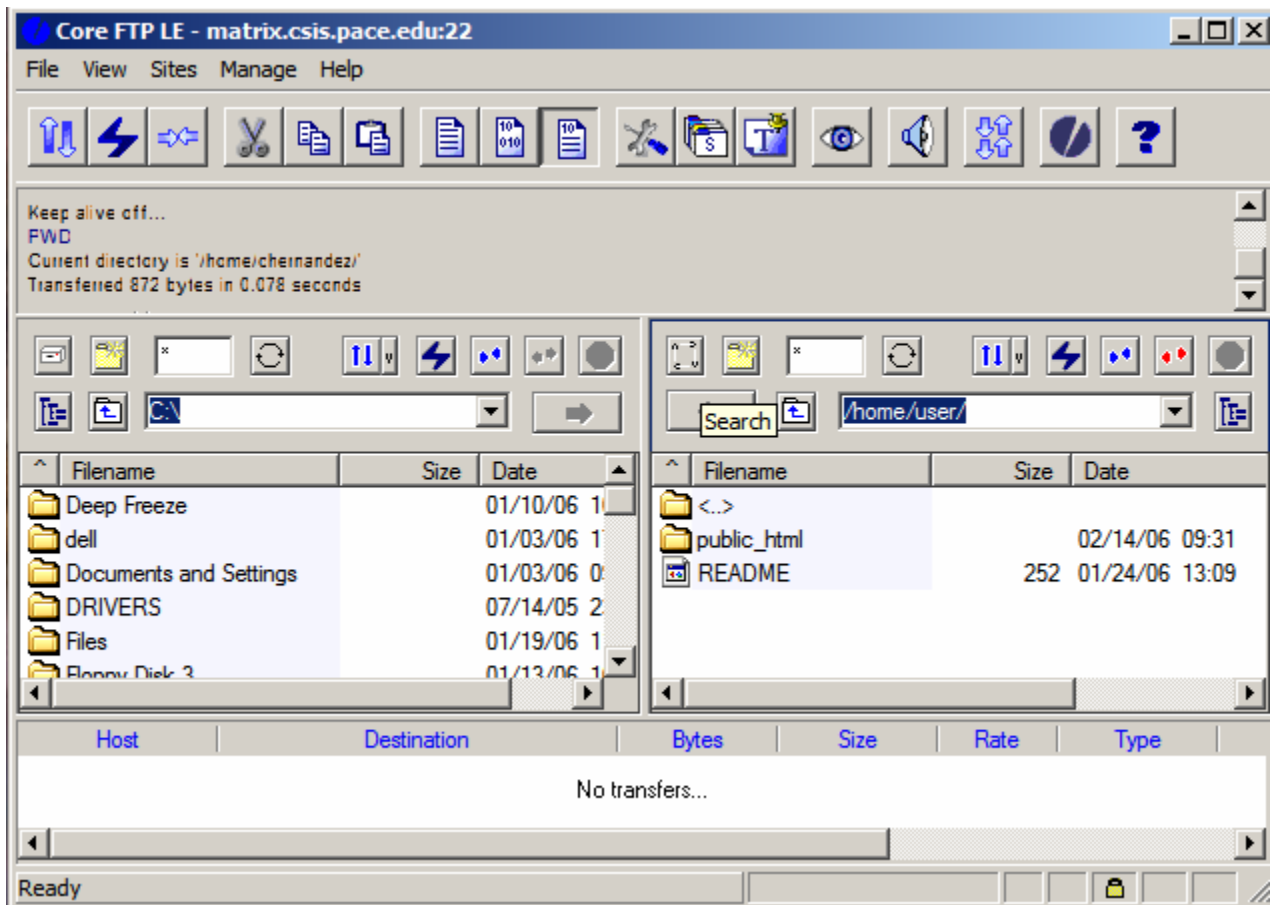
After you download the file you will have a single executable file called Coreftplite1.3.exe. Launch this executable to begin the installation. You will be shown a few screens where you will be prompted to click on "Next". After clicking "Next" for the Read Me section, you will be prompted to enter where you want the installed files to be placed on your computer. The default value is usually acceptable. After this step, you will be shown a screen where you will be asked if you would like to Backup Replaced Files, the default option is yes. Click on "Next" to choose the Program Manager Name, Click on "Next" to start the installation, and the final step is to click on "Finish" and your Core Ftp client program is installed.

Connecting to an FTP Server

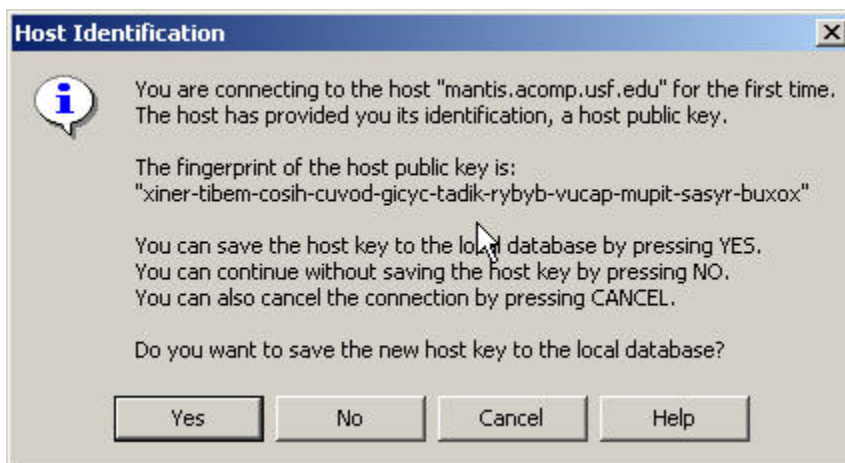
When installation is complete, run the Core FTP Client from either the desktop icon or Windows Start Menu.



Once opened, the Site Manager will appear. Create a Site Name, and then enter the full host-name of the server to connect to (i.e. matrix.csis.pace.edu), your username, port 22, and check the box "SSH/SFTP". Then press Connect.



You will be informed that this is the first time you have connected to this host and asked if you want to save its public key. Select Yes to remember the host's unique identification.



Transferring Files (Upload/Download)

Once you have established a connection to a server, you can now start transferring files between your computer and the remote FTP server.

